

JOINT BASE LEWIS/McCHORD FY11 – FY13 MILITARY CONSTRUCTION ARMY (MCA) PROGRAM

Victor M Ramos, PMP

MCA Program Manager

Seattle District

April 27, 2011



AGENDA

- Program Overview
- Facility Types
- Acquisition Strategy
- Program Breakout by Area Development Plan Region



BUILDING STRONG®

Program Overview

- FY11
 - ▶ 11 Projects (4 Carryovers and 1 at Yakima)
 - ▶ Combined PA is \$228M
- FY12
 - ▶ 7 Projects
 - ▶ Combined PA of \$308M
- FY13
 - ▶ 7 Code 3 Directives
 - ▶ Combined PA of \$420M

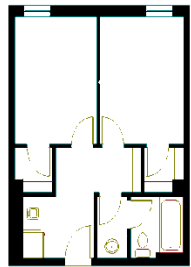


Facility Types

- Army Barracks / College Dormitories
- Company Operations Facilities (COFs) / Industrial Admin Warehouses
- Battalion/Brigade Headquarters / Office Buildings
- Tactical Equipment Maintenance Facilities(TEMFs) / Heavy Equipment Maintenance Facility
- Dining Facilities / College Cafeterias



Barracks



MILCON Barracks

Function: House Soldiers
Construction Type: Type I or II non-combustible
Occupancy Type: Residential
Operations: Accommodate sleeping/Bathing, Relaxation/Cooking, Accommodate Privacy, Gather People, Facilitate Circulation



Private Industry Apartment

Function: House People
Construction Type: All Types
Occupancy Type: Residential
Operations: Accommodate Sleeping/Bathing, Relaxation/Cooking, Accommodate Privacy, Gather People, Facilitate Circulation



BUILDING STRONG®

COFs



Installation

- Function: Centralize Operations
- Construction Type: Type I or II non-combustible
- Occupancy Type: Business/Storage
- Operations: Manage People, Centralize Command & Operations, Store & Move Supplies



Industry

- Function: Centralize Operations
- Construction Type: All Types
- Occupancy Type: Business/Storage
- Operations: Manage People, Centralize Command and Operations, Store and Move Supplies



BUILDING STRONG®

BNHQs



Installation

- Function: Administer Military Operations
- Construction Type: Type I or II non-combustible
- Occupancy Type: Business
- Operations: Manage People, Centralize Operations, Manage Business Activities



Industry

- Function: Administer Business
- Construction Type: All Types
- Occupancy Type: Business
- Operations: Manage People, Centralize Operations, Manage Business Activities



BUILDING STRONG®

TEMFs



Installation

- Function: Maintain and Repair Vehicles
- Construction Type: Type I or II non-combustible
- Occupancy Type: Factory (Mod-High Haz)
- Operations: Maintain and Repair Vehicles, Organize Equipment and Tools, Store Parts, Admin, Operations, Training, Deployment



Industry

- Function: Maintain and Repair Vehicles
- Construction Type: All Types
- Occupancy Type: Factory (Mod-High Haz)
- Operations: Maintain and Repair Vehicles, Organize Equipment and Tools, Store Parts, Admin, Operations



BUILDING STRONG®

DINING FACILITIES

REGIONAL DESIGN - FORT LEWIS, WA
DINING FACILITY (DFAC) PROPOSAL



Installation

- Function: Feed People
- Construction Type: Type I or II non-combustible
- Occupancy Type: Assembly
- Operations: Feed People, Prepare and Serve Food, Accommodate Seating and Dining, Accommodate Studying, Gather People, Facilitate Circulation



Industry

- Function: Feed People
- Construction Type: All Types
- Occupancy Type: Assembly
- Operations: Feed People, Prepare and Serve Food, Accommodate Seating and Dining, Accommodate Studying, Gather People, Facilitate Circulation



BUILDING STRONG®

Current Construction



FY09 624 Person UEPH, Aug 2010



FY09 624 Person UEPH, Mar 2011



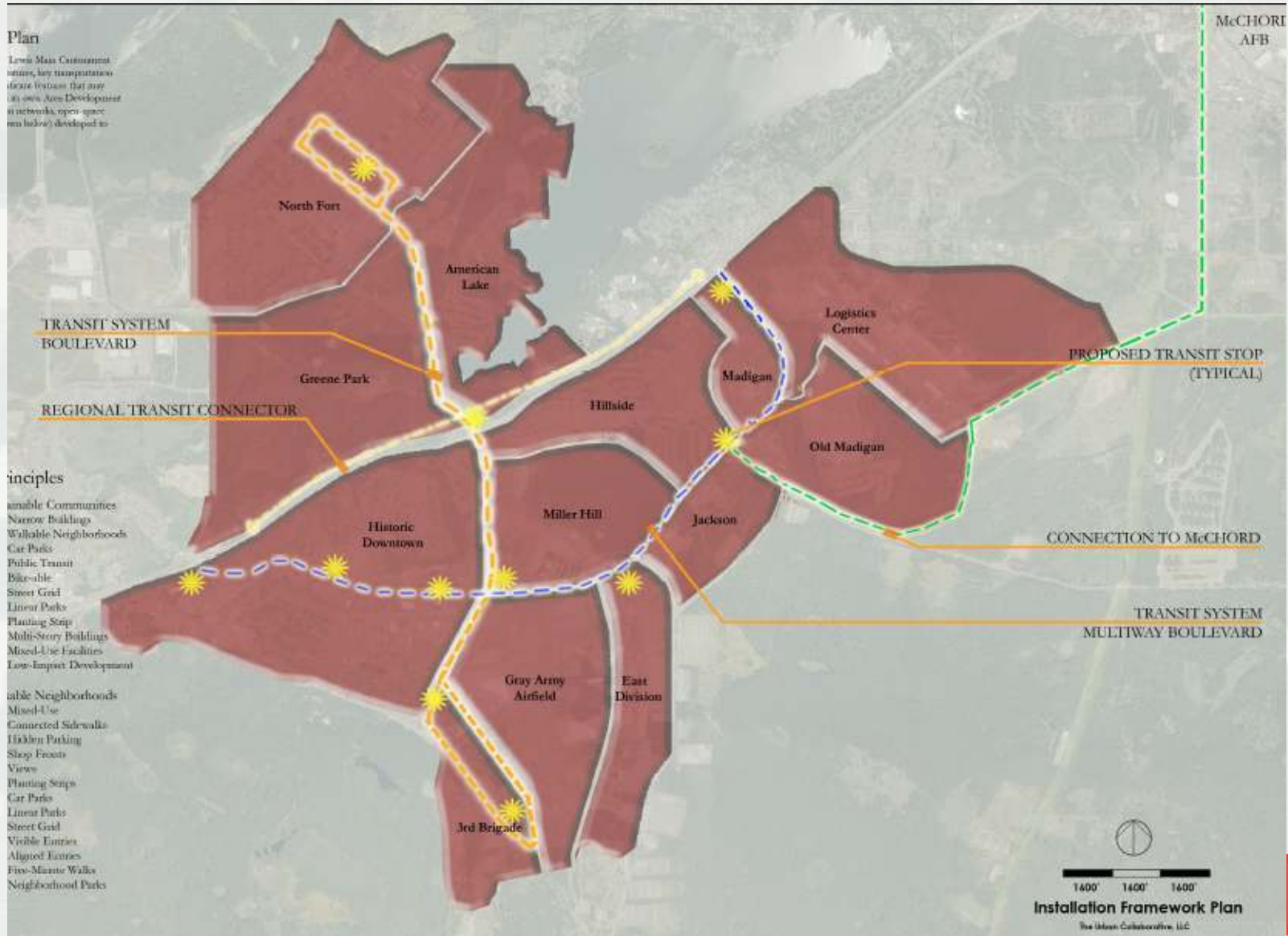
BUILDING STRONG®

Acquisition Strategy

- Regional Multiple Award Task Order Contracts (MATOC)
 - ▶ Larger Facilities
 - ▶ Adapt Build vs. Design Build
 - ▶ Centers of Standardization (COS) Districts
- Local MATOCs
- Local Competitive Contracts



JBLM ADP Breakout



3rd Brigade Area

FY11, Stryker Complex, Phase 2,
PN55198,

PA: \$40M

Scope: UEPH, COF

Aq Strategy: COS MATOCs

FY12, Air Support Operations
Squadron, PN60344

PA: \$7.5M

Scope: Weather Squadron (Desired
Location)

Aq Strategy: NWS MATOC



BUILDING STRONG®

Grey Army Field Area

FY12 ACS Complex, Phase 2,
Parking Apron, PN 76768

PA: \$49M

Scope: Parking Apron Expansion,
Storm water retention

Aq Strategy: NWS MATOC

FY12, Air Support Operations
Squadron, PN60344

PA: \$7.5M

Scope: Simulator Addition, Weather
Squadron Facility (old site),

Aq Strategy: NWS MATOC



BUILDING STRONG®

Logistics Center

FY11, Regional Logistics Center,
Phase 1, PN 72854

PA: \$63M

Facility Disc: TEMF

Aq. Strategy: COS MATOC

FY11, Regional Logistics Center,
Phase 2, PN 72838

PA: \$16.5M

Facility Disc: Warehouse

Aq Strategy: "C" Contract

FY10, Lewis-McChord Joint Access
Road, PN74408

PA: \$9M

Scope: Road

Aq Strategy: NWS MATOC



BUILDING STRONG®

East Division Area (FY11/12)

FY11, Integrated Theatre Support Battalion,
PN 64457

PA: \$47M

Scope: UEPH, Infrastructure, Road Widening

Aq Strategy: COS MATOC (UEPH), Local
MATOC (Infrastructure Road)

FY 12 , ACS Complex Ph 1, Barracks,
PN76767

PA: \$38M

Scope: UEPH

Aq Strategy: COS MATOC

FY12, BCT Complex Ph 2, PN53637

PA: \$57M

Scope: UEPH, BNHQ, Road/Infrastructure
Upgrade

Aq Strategy: COS MATOC (UEPH, BHHQ),
NWS Competitive 8A (Road/Infr)



BUILDING STRONG®

East Division Area (FY13)

FY13, BCT Complex Phase 3, PN64285

PA: \$79M

Scope: UEPH, TEMF, COF

Aq Strategy: COS MATOCs

FY13, Battalion Complex, Ph3, PN64456

PA: \$80M

Scope: UEPH, BNHQ, DFAC

Aq Strategy: COS MATOCs (UEPH, BHHQ),

FY13, Brigade Complex, Phase 5, PN67066

PA: \$103.7M

Scope: BNHQ, COF, TEMF, Roads

Aq Strategy: COS MATOCs, NWS

Competitive 8A (Roads)



BUILDING STRONG®

Miller Hill Area

FY12 , BCT Complex, PN 64014

PA: \$60M

Scope: UEPH, TEMF, COF, BNHQ

Aq Strategy: COS MATOCs

FY13 , Enlisted Unaccompanied
Personnel Housing, Ph2, PN67091

PA: \$45M

Scope: UEPH, BGHQ, BNHQ,

Aq Strategy: COS MATOCs



BUILDING STRONG®

North Fort Area

FY12 ORTC Complex, PN58046

PA: \$30M

Scope: Training Barracks, DFAC

Aq Strategy: LRL MATOC
(Barracks), NAO MATOC (DFAC)

FY12 Infrastructure Upgrade, PN
66206

PA: \$65M

Scope: Ball Fields, Access Control
Point (North Fort), Road Widening

Aq Strategy: NWS MATOC
(ACP), NWS 8A Competitive
(Roads/Infrastructure)

FY13, North Fort Physical Fitness
Center, PN49482

PA: \$49M

Scope: Fitness Center

Aq Strategy: TBD



BUILDING STRONG®

Historic Downtown Area

FY 12 Infrastructure, PN 66206

PA: \$65M

Scope: 14th Street Expansion,
Infrastructure Upgrade

Aq Strategy: NWS 8A Competitive

FY13 ,I Corps HQ, PN 70420

PA: \$61M

Scope: New Corps HQ

Aq Strategy: TBD

FY10, BCT Complex, Incr 4,
PN65935

PA: \$19M

Scope: Road Expansion,
Infrastructure Upgrade

Aq Strategy: NWS 8A Competitive



BUILDING STRONG®

Madigan Area

FY10 Non-Organizational Parking,
PN77559

PA: \$1.85M

Scope: Parking for 500 vehicles

Aq Strategy: 8A IDIQ

FY09 Warrior in Transition, PN69224

PA: \$100M

Scope: Admin Facility with SFAC, BNHQ,
COF

Aq Strategy: Stand Alone "C" Contract



BUILDING STRONG®



QUESTIONS?



BUILDING STRONG®